

Busby retains optimism

Rockhampton-based group favours experienced multi-skilled staff

WHEN it comes to the trades and technical industry, the Busby Group is a key player in the employment sector.

Based in Rockhampton, the Busby Group now encompasses five different arms – civil and mine construction, transport services, house removals, demolition and plant hire.

The organisation was launched in 2003 when Patrick Busby joined forces with his brother Ray.

The pair did not envision that their new found business would become a nationally recognised and multi-million dollar organisation.

These days, Busby Contractors is managed by Patrick together with Kevin Surman and Don Stephen who are also experienced in earthworks and mining construction.

Further to these three, there are two other company directors, Michael Busby, a valuer who runs the house removal division and Raymond Busby, in charge of the transport division.

The group has up to 100 employees at any one time, with about 50 of these employees operating in the construction division.

Commercial manager Ron Busby said the group was proud to boast experienced employees.

"In our businesses we are more inclined to engage a



CANDICE HOLZNEL

Recruitment editor

Candice@edgecommunications.com.au

majority of skilled workers as opposed to strictly tradesmen and apprentices," he said.

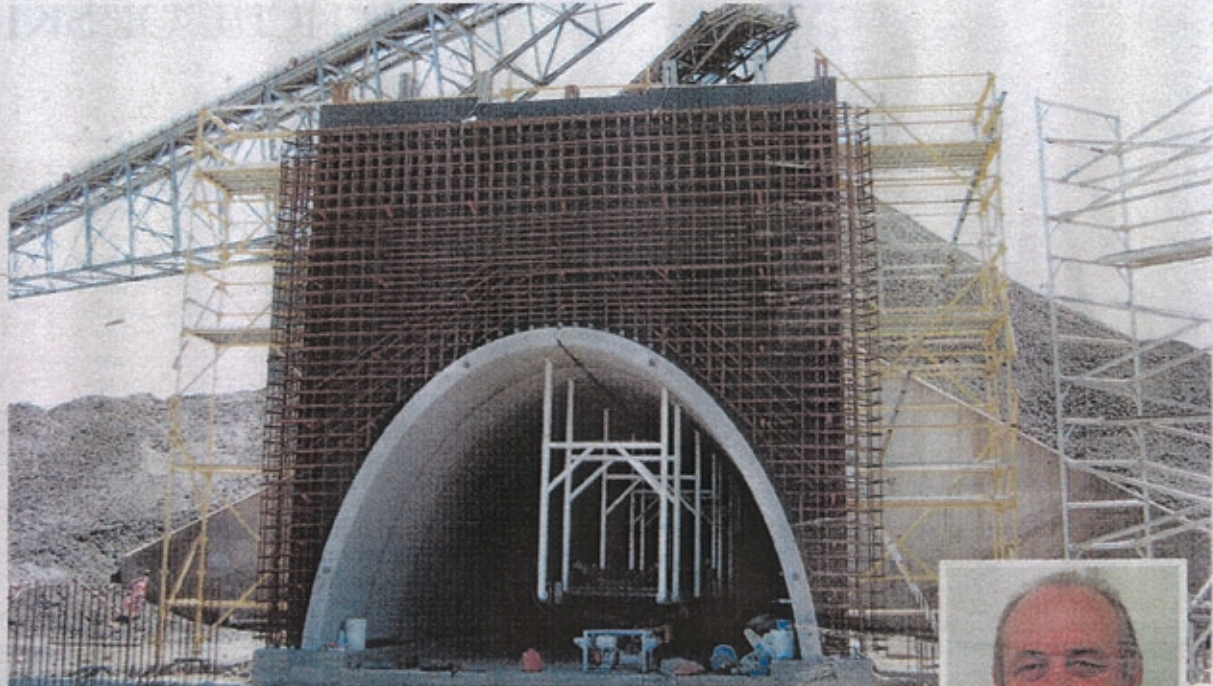
"We always look forward to a very strong future growth after things eventually settle in the current market."

The contracting sector of the Busby Group employs about 50 individuals consisting of project managers, site supervisors, surveyors, carpenters-form setters and a skilled workforce, including concrete workers and finishers.

"We need good all rounders who can tie steel, erect formwork, place and finish concrete," Ron said.

"An experienced carpenter on a construction site would normally hold the position of foreman or leading hand, having honed these skills over his years of experience in the construction and other related industries.

"We provide assistance with extensive training to our skilled workers, espe-



ENGINEERING: Civil and mine construction is just one of the five arms of the Busby Group.
INSET: Ron Busby.

PHOTOS: CONTRIBUTED

cially in obtaining operating tickets for machinery, mine inductions and the like."

Busby Transport has about 20 drivers, a mechanic, a trades assistant and an apprentice mechanic.

And the business is always in need of reliable and experienced truck drivers.

The majority of the work at the moment involves heavy haulage and the use of crane truck semi-trailers carting to the central Queensland mining areas.

Another section of the business is Busby House Removals.

This arm of the organisation has a crew of about 10 including supervising staff, carpenters, truck drivers and trained escort drivers.

And work is not scarce.

"Our workers are kept very busy at the present time with house relocations, raise and re-stumps booked six months in advance," Ron said.

"Then there is Busby Plant Hire which owns plant and equipment which, if not being used on our construction sites, is generally hired out to contractors and the mining companies."

Busby Demolition is also incorporated into the overall Busby Group.

Ron said they require employees on an ongoing basis.

"Demolition requires good machinery operators and skilled workers with



experience and the mandatory certificates in the safe removal of asbestos and other hazardous materials," he said.

"Most of our work in recent times has been for government bodies and mining companies."

To find out more about the Busby Group log on to www.busbygroup.com.au